






B&C TW056 Triblend /women - BD69



MEDIUM FIT

Your favourite polyester blend T-shirt in innovative triblend with a perfect fit, a very soft silky handfeel at an affordable price. "B&C No Label" solution for easy rebranding.



-  50% polyester, 25% cotton, 25% viscose
-  "Triblend" Single Jersey
-  130 g/m²
-  XS - S - M - L - XL - 2XL
-  10 pcs / pack & 50 pcs / carton



**DUO
CONCEPT**

with B&C TM055 Triblend /men

Cut / Fit

- A modern take on the classic essential Tee, this triblend short-sleeved T-shirt is clean and minimalistic for any occasion
- Featuring a clean design, this supersoft and silky triblend T-shirt offers an easy and medium fit with a premium solid or melange finish
- The B&C TW056 Triblend T-shirt is made from extra-soft blend of polyester-cotton-viscose jersey with an even and smooth surface
- Comfortable body length construction for a perfect retail look
- Side seams ensure the best fit and a feminine silhouette

- For long-lasting comfort, the neck seams are reinforced with soft binding
- Thin collar in self fabric for a modern, up to date appearance
- Easy, relaxed draped shape and minimalist cut and detailing suitable for many uses and end user requirements

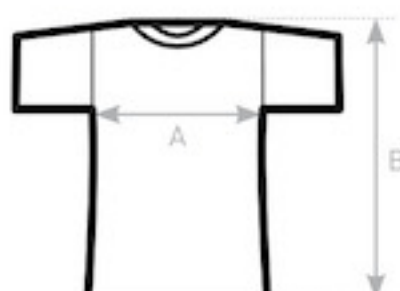
Handfeel

- The B&C TW056 Triblend T-shirt is made from triblend supersoft jersey with a luxurious silky handfeel and long-lasting comfort
- Triblend fabric composition provides silkiness, fluidity and extra soft handfeel

- Comfortable, breathable and an ease-of-wear feeling thanks to the cotton blend
- Highly durable, flexible and wrinkle free thanks to the polyester

Printability / Decoration

- Very smooth and even surface allows bright and crisp printing output
- "B&C No Label" solution for perfect rebranding
- Tested and approved for all standard printing techniques applicable - "Sublimation friendly"



SIZES [CM]

B&C TW056 TRIBLEND /WOMEN TW 056	XS	S	M	L	XL	2XL	3XL
A HALF CHEST	42	45	48	51	54	57	-
B BODY LENGTH FROM NECK POINT	62	64	66	68	70	72	-