

# B&C SKILL PRO - BP10

regular fit



OEKO-TEX® 100 CERTIFIED



Half-moon yoke for decoration and hanging loop in the back neck

Drop shoulder seams to avoid friction

Necktape

1x1 rib collar & cuffs

Reinforced 4-needle flatlock stitching on button placket

Reinforced side vents (herringbone & bartack) for comfort, freedom of movement & durability

Longer back panel

2-needle reinforced stitching for durability

Flatlock stitching on shoulders & armholes for extra comfort

Practical concealed chest pocket

BLACK [002]  
NAVY [003]

DARK GREY [670]

- Short-sleeved workwear heavy weight polo shirt
- Modern design
- 1x1 rib collar and cuffs
- Practical concealed chest pocket

- Tone-on-tone 3-button placket
- Side seams
- Easy Care - 60°C Wash Suitable for tumble dry

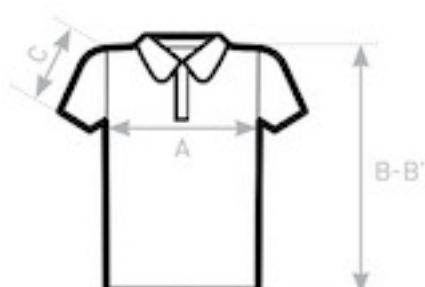
100% pre-shrunk ring-spun combed cotton

Fine Piqué

230 g/m²

S - M - L - XL - 2XL - 3XL - 4XL

5 pcs/pack & 30 pcs/carton



## SIZES

B&C SKILL PRO - BP10	S	M	L	XL	2XL	3XL	4XL
A HALF CHEST WIDTH	51	54	57	60	63	66	69
B BODY LENGTH (FRONT)	69,5	71,5	73,5	75,5	77,5	79,5	81,5
B' BODY LENGTH (BACK)	71,5	73,5	75,5	77,5	79,5	81,5	83,5
C SLEEVE LENGTH	25	25	25	26	26	26	27



## STYLE

- / Short-sleeved workwear heavy weight polo shirt
- / Modern design
- / 1x1 rib collar & cuffs
- / Practical concealed chest pocket
- / 3 tone-on-tone buttons
- / Side seams

## COMFORT

- / Soft touch combed cotton
- / Half-moon yoke for decoration & hanging loop in the back neck
- / Self fabric necktape to add comfort & style
- / Drop shoulder seams & armholes seams with flatlock stitching to avoid friction
- / Side vents for more freedom of movement & ease of fit
- / Longer back panel

## DURABILITY

- / Heavy weight Fine Piqué polo shirt
- / 4-needle reinforced stitching on shoulders & armholes
- / Reinforced 4-needle flatlock stitching on button placket with fusible interlining for extra strength
- / Reinforced side vents (herringbone & bartack)
- / Bartacks to reinforce critical points (pocket, hanging loop, side vents and button placket)
- / 1 spare button

## CARE

- / Easy Care
- / 60°C Wash
- / Suitable for tumble dry

**B&C PRO / JUST KEEP WORKING**