

# B&C CORPORATE 3-IN-1 - BS77

## HEAVY WEIGHT JACKET / PARKA



**Modern multi-use hooded 3-in-1 parka designed to protect in all weather conditions**

### POLYESTER PONGEE

#### Outer jacket:

Out: 100% polyester pongee

In: Body lining: 100% polyester mesh

Sleeve lining: 100% polyester 190T taffeta

**Inner jacket: 100% polyester anti-pilling micro-fleece**

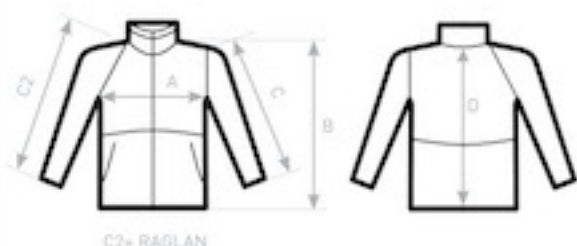
XS - S - M - L - XL - 2XL - 3XL

1 pc/pack & 10 pcs/carton



- Windproof
- Waterproof
- Water-repellent
- Thermo-insulated
- ANTI PILLING Anti-pilling micro-fleece
- Critical seams taped

- Ultra protective hood concealed in the collar, ergonomically designed
- Adjustable bottom hem with drawstring and ergonomic sleeve design with adaptable cuffs provide a comfortable fit
- Zip-in fleece with 5 point change system
- 2 zipped hand pockets with overlap, zipped chest pocket
- Zip at lower back gives easy and full decoration access (front - back - sleeves)
- Fabric tested for the following decoration techniques: screen printing, heat transfer, and embroidery



### SIZES [CM]

B&C CORPORATE 3-IN-1 JU 873	XS	S	M	L	XL	2XL	3XL
A HALF CHEST	55	58	61	64	67	70	73
B BODY LENGTH FROM NECK POINT	81	82,5	84	85,5	87	88,5	90
C SLEEVE LENGTH	65,5	67	68,5	70	71,5	73	74,5
D CENTER BACK LENGTH	78,5	80	81,5	83	84,5	86	87,5

**OUTER WEAR /UNIT**