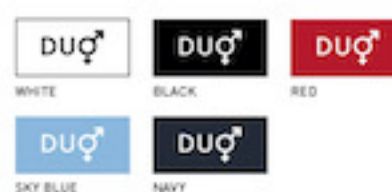


B&C HEAVYMILL /WOMEN - O37



MEDIUM FIT

- Short-sleeved Fine Piqué polo shirt
- 1x1 rib knitted collar and cuffs
- Side vents
- Gathered on sleeve head
- 2-button placket reinforced with fusible interlining
- Matching colour buttons
- Feminine cut
- Necktape
- Side seams

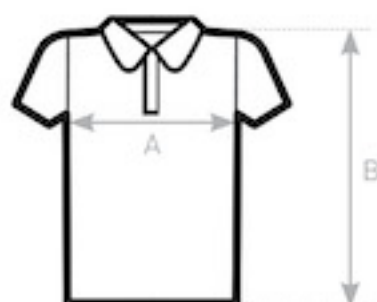


- 100% pre-shrunk ring-spun **combed** cotton
- Fine Piqué
- 230 g/m²
- XS - S - M - L - XL - 2XL
- 5 pcs/pack & 25 pcs/carton



DUO
CONCEPT

with B&C Heavymill /men



SIZES [CM]

B&C HEAVYMILL /WOMEN PW 460	XS	S	M	L	XL	2XL	3XL
A HALF CHEST	39,5	42,5	45,5	48,5	51,5	54,5	-
B BODY LENGTH FROM NECK POINT	60	62	64	66	68	70	-

OEKO-TEX®
CONFIDENCE IN TEXTILES
STANDARD 100
1501001 Certified
Toll-free for harmful substances
www.oeko-tex.com/standard100